

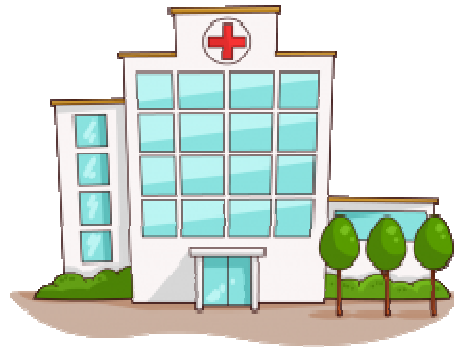
Please respect our staff...

This guide has been produced to assist patients & visitors configure their devices to enable them to get online whilst in the hospital.

In order to make use of this free service, you must have your own wireless enabled device and be able to connect to the WHAT_Guest network.


Trust staff will not be able to provide support for personal devices and connection is not guaranteed. Trust staff are here to support clinical activities and patient care. We would ask that you respect their time by not asking them to provide support related to this wireless service, or your device.

The wireless internet service may be taken offline for planned or unplanned maintenance without notice or guarantee of automatic reconnection.



Weston Area Health **NHS**
NHS Trust

Weston General Hospital
Grange Road
Uphill
BS23 4TQ

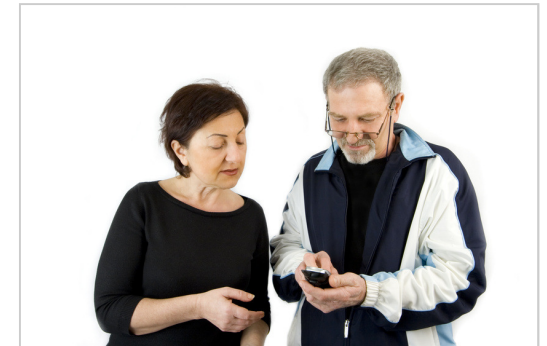
 IT Service Desk
01934 881390

WIRELESS INTERNET

Weston General Hospital

Patient Guide

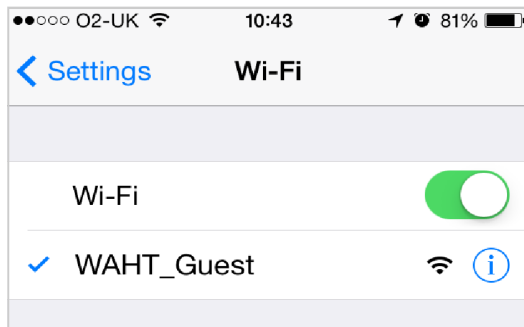
Weston Area Health Trust are pleased to be able to offer a free wireless internet service within the Hospital for patients and their visitors to get online using their own wireless enabled devices.



Weston Area Health **NHS**
NHS Trust

GETTING ONLINE

- 1 You will need to self register for access to the internet, which will be time limited to 24hrs.
- 2 Connect your device to the wireless network called WAHT_Guest.



Once connected to the network, your web browser should open automatically and you will be presented with the WAHT Wi-Fi login page.

- 3 Follow the link to the sign up page and complete the fields to register for your account, or input your username and password if you already have one.

Weston Area Health **NHS** Trust

Visitors may request limited wifi access by completing and submitting the following form;

Visitor Registration

* Your Name: Please enter your full name.

* Email Address: Please check your email address is correct as we will use this to send you log in details to.

* Purpose of visit: Please tell us which area of the hospital you are visiting today and why.

* Confirm: ☐ I accept the [terms of use](#)

* required field

Please [sign in here](#) if you are a member of staff, or already have an account.

TO USE THIS SERVICE, YOU MUST READ AND ACCEPT OUR TERMS OF USE

Please read the [terms of use](#) and tick the box to accept that you agree to abide by the Trust guidelines for acceptable use.

- 4 Click the login button and your browser should display the following message;

Network Login In Progress...
Please wait while you are logged into the network...

Once you are successfully connected, you should automatically be redirected to the Trust website. The version you will see depends on the type of device you are using.

- 5 When connected, you will be able to browse the internet as normal, read & send emails, use smart phone apps etc.

Please note that some websites may be blocked due to the nature of their content. You will be made aware if this happens.

